

San Joaquin County
2021 Redistricting
Draft Plan Revisions



Agenda

Things we will cover:

- Fair Maps Act Criteria
- Board of Supervisor Comments
- Three Draft Plans
 - Plan D2
 - Plan D3
 - Plan E
- Next Steps

Traditional Redistricting Principles

Complying with the Fair Maps Act

The Fair Maps Act passed by the Legislature mandates a set of criteria we must follow when drawing district plans.

- Relatively equal size - people, not citizens
- Contiguous – districts should not hop/jump
- Maintain “*communities of interest*”
- Follow city and census designated place boundaries
- Keep districts compact – appearance/function

From COI to Draft Maps

Getting from input to new proposed maps

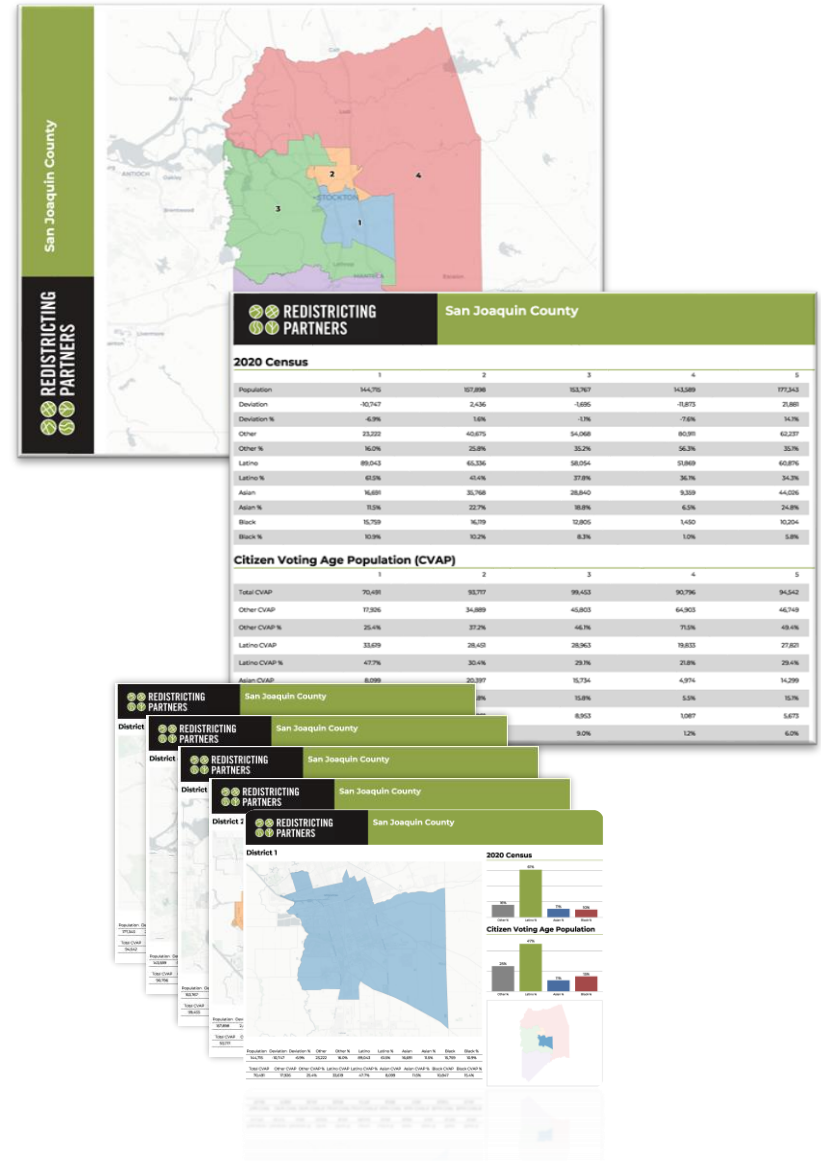
Redistricting Partners needs your feedback on these potential draft plan versions.

- All plans will follow the required criteria, VRA, Compactness, Contiguity, equal population, etc.
- Need feedback from the Redistricting Advisory Commission and the community on potential versions as we're working toward a recommendation to the Board.

From COI to Maps

With the Fair Maps Act requiring counties to include the public input in the redistricting process, we move redistricting out into the public, with maps driven by Community of Interest testimony.

- **Input from community drives process** with multiple ways for the public to engage.
- **Rules for process** emphasize the importance of traditional criteria and minimizing divisions of neighborhoods.
- **Releasing maps for feedback** – today we will see plans to spark more public engagement.



Communities of Interest

Outreach Hearings & Public Testimony

After three outreach hearings, many DistrictR submitted maps, and multiple RAC Meetings, we've received public and Commissioner input. The themes of testimony received:

- Unite Tracy with Mountain House
- Respect the rural/agricultural areas and their unique interests within the County by creating Western and Eastern rural districts
- Respect the Delta and that it is in at least two districts
- Stockton must be split because of its size – look to Lodi USD, major thoroughfares, and neighborhood lines
- Don't split Manteca into multiple districts
- Unify the Port in one District

Communities of Interest

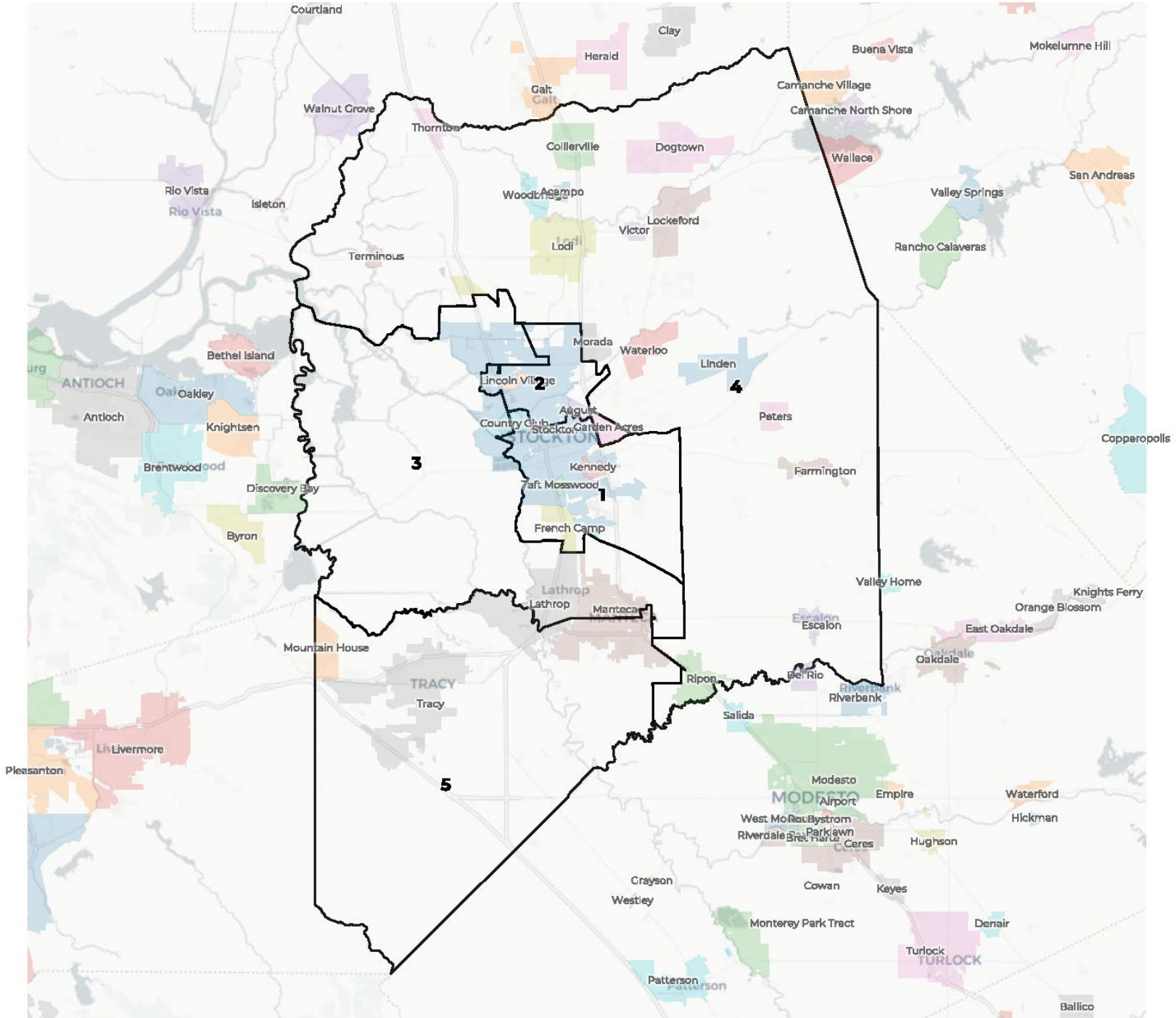
Board of Supervisor Comments

On November 2nd, the Board of Supervisors discussed the redistricting process and the draft plans presented to the RAC. Their comments are as follows:

- Uniting north Stockton along Eight Mile Road would help to unify a Community of Interest.
- To unite northern Stockton into District 2, you could move District 3 into northeastern Stockton and Waterloo into District 4
- District 5 should have additional unincorporated agricultural land
- Lathrop and Manteca should be united within a district
- The Delta should be united in District 3 or 4
- The RAC should recommend at least 3 plans to the Board that provide multiple architectures

REDISTRICTING PARTNERS

San Joaquin County 2011 Board of Supervisor Districts



2020 Census

	1	2	3	4	5
Population	144,715	157,898	153,768	143,587	177,345
Deviation	-10,748	2,435	-1,695	-11,876	21,882
Deviation %	-6.9%	1.6%	-1.1%	-7.6%	14.1%
Other	23,222	40,671	54,068	80,912	62,238
Other %	16.0%	25.8%	35.2%	56.4%	35.1%
Latino	89,043	65,336	58,055	51,868	60,876
Latino %	61.5%	41.4%	37.8%	36.1%	34.3%
Asian	16,691	35,771	28,840	9,358	44,026
Asian %	11.5%	22.7%	18.8%	6.5%	24.8%
Black	15,759	16,120	12,805	1,449	10,205
Black %	10.9%	10.2%	8.3%	1.0%	5.8%

Citizen Voting Age Population (CVAP)

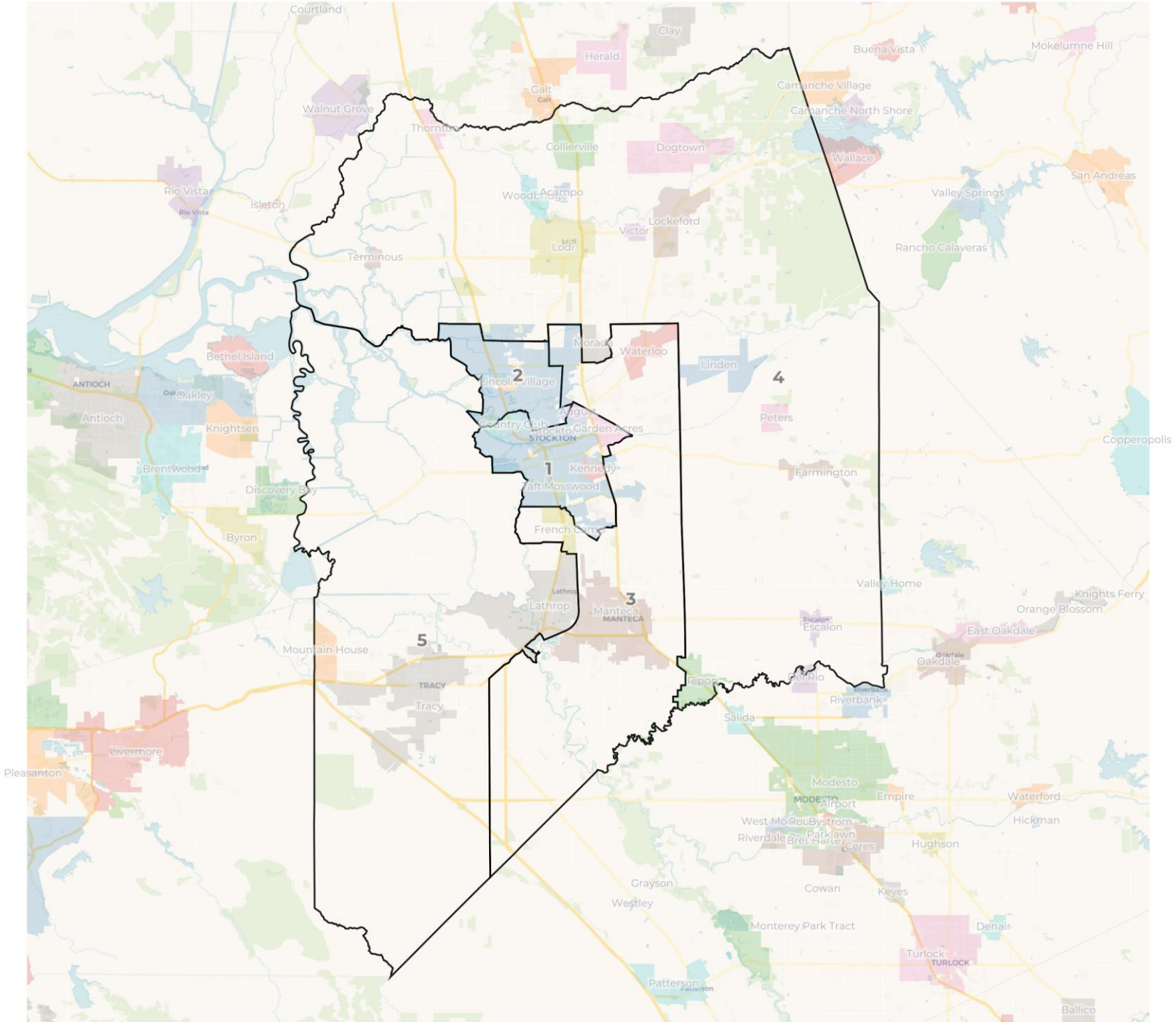
	1	2	3	4	5
Total CVAP	70,491	93,717	99,453	90,796	94,542
Other CVAP	17,926	34,889	45,803	64,903	46,749
Other CVAP %	25.4%	37.2%	46.1%	71.5%	49.4%
Latino CVAP	33,619	28,451	28,963	19,833	27,821
Latino CVAP %	47.7%	30.4%	29.1%	21.8%	29.4%
Asian CVAP	8,099	20,397	15,734	4,974	14,299
Asian CVAP %	11.5%	21.8%	15.8%	5.5%	15.1%
Black CVAP	10,847	9,981	8,953	1,087	5,673
Black CVAP %	15.4%	10.7%	9.0%	1.2%	6.0%

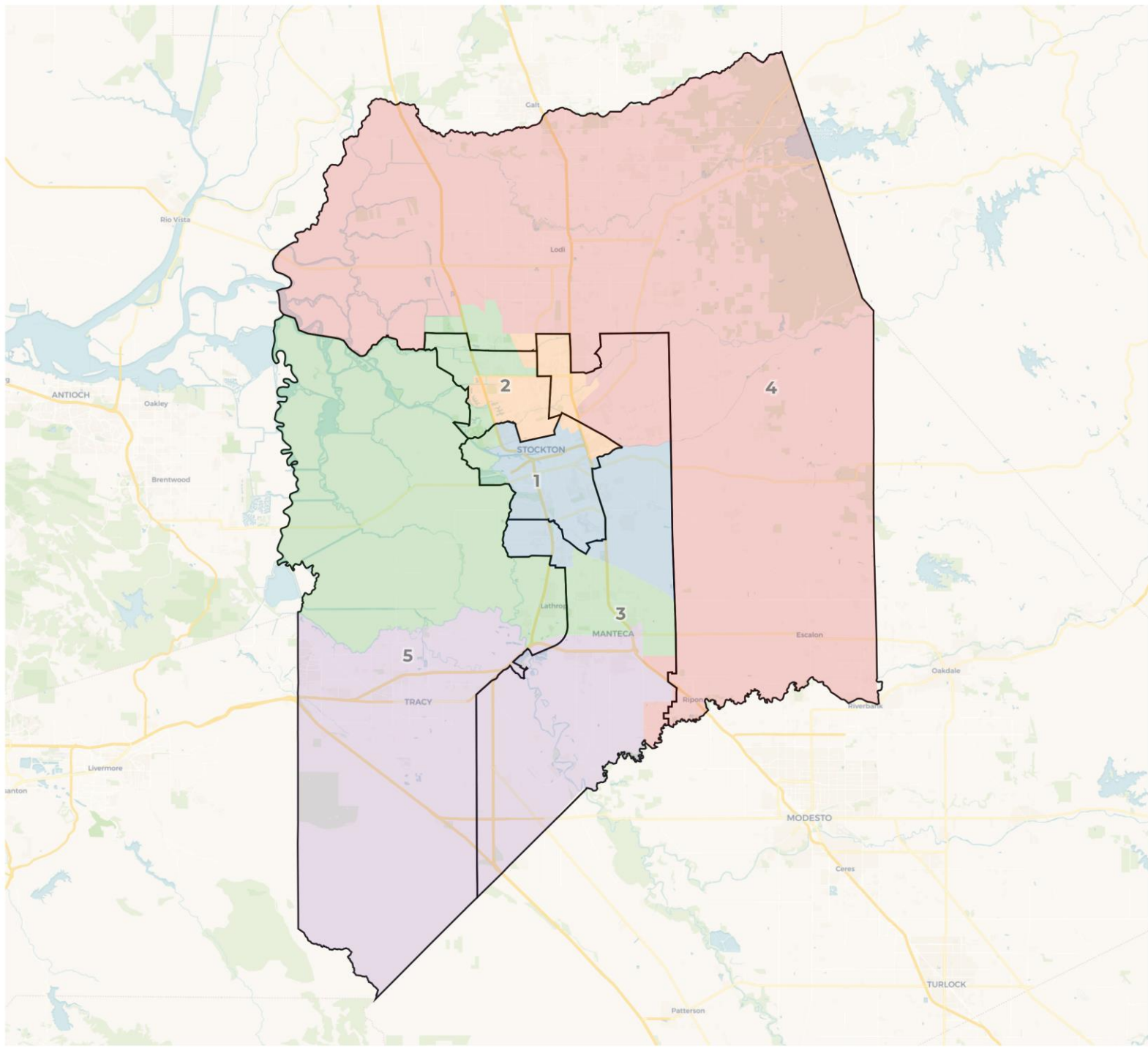
Draft Plan D2

This is the version of the map we drew together at the last RAC Meeting.

Changes made to Draft Plan D:

- Country Club was fully unified in District 1 with the eastern board moved to Pershing
- The northern border of District 2 was moved north to Eight Mile Road along the NE border
- Morada was moved into District 3





2020 Census

	1	2	3	4	5
Population	157,657	158,737	150,259	154,652	156,008
Deviation	2,194	3,274	-5,204	-811	545
Deviation %	1.4%	2.1%	-3.3%	-0.5%	0.4%
AiAn	832	550	670	532	497
AiAn %	0.5%	0.3%	0.4%	0.3%	0.3%
Latino	98,510	58,753	59,491	53,510	54,914
Latino %	62.5%	37.0%	39.6%	34.6%	35.2%
Asian	16,897	30,055	30,562	15,192	41,980
Asian %	10.7%	18.9%	20.3%	9.8%	26.9%
Black	15,941	19,902	7,672	3,004	9,819
Black %	10.1%	12.5%	5.1%	1.9%	6.3%

Citizen Voting Age Population (CVAP)

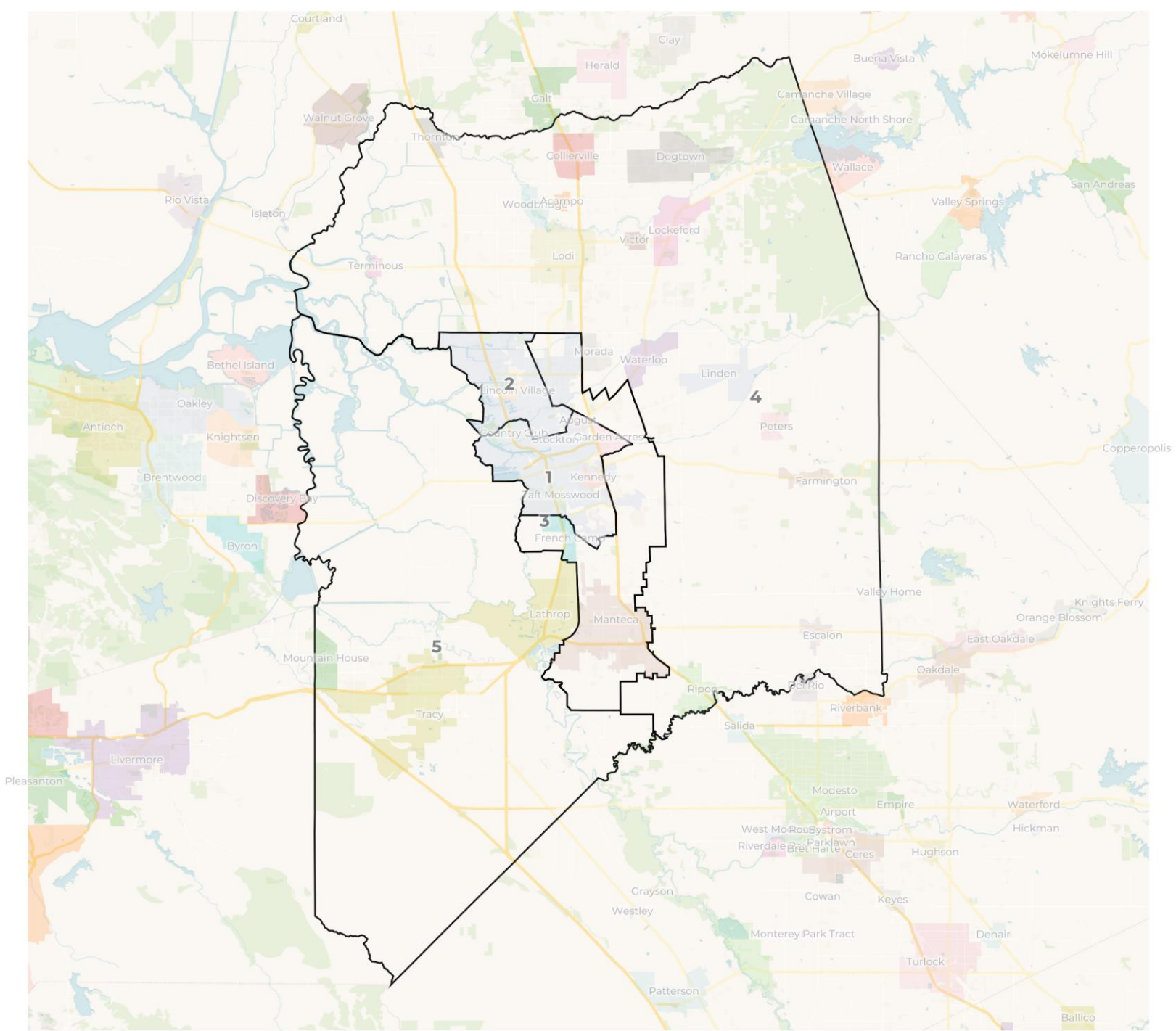
	1	2	3	4	5
Total CVAP	77,537	103,464	93,295	98,863	84,722
AiAn CVAP	145	332	369	292	156
AiAn CVAP %	0.2%	0.3%	0.4%	0.3%	0.2%
Latino CVAP	38,269	28,981	28,501	22,595	26,545
Latino CVAP %	49.4%	28.0%	30.5%	22.9%	31.3%
Asian CVAP	8,885	18,262	14,691	8,537	16,249
Asian CVAP %	11.5%	17.7%	15.7%	8.6%	19.2%
Black CVAP	11,400	12,415	5,867	2,108	4,940
Black CVAP %	14.7%	12.0%	6.3%	2.1%	5.8%

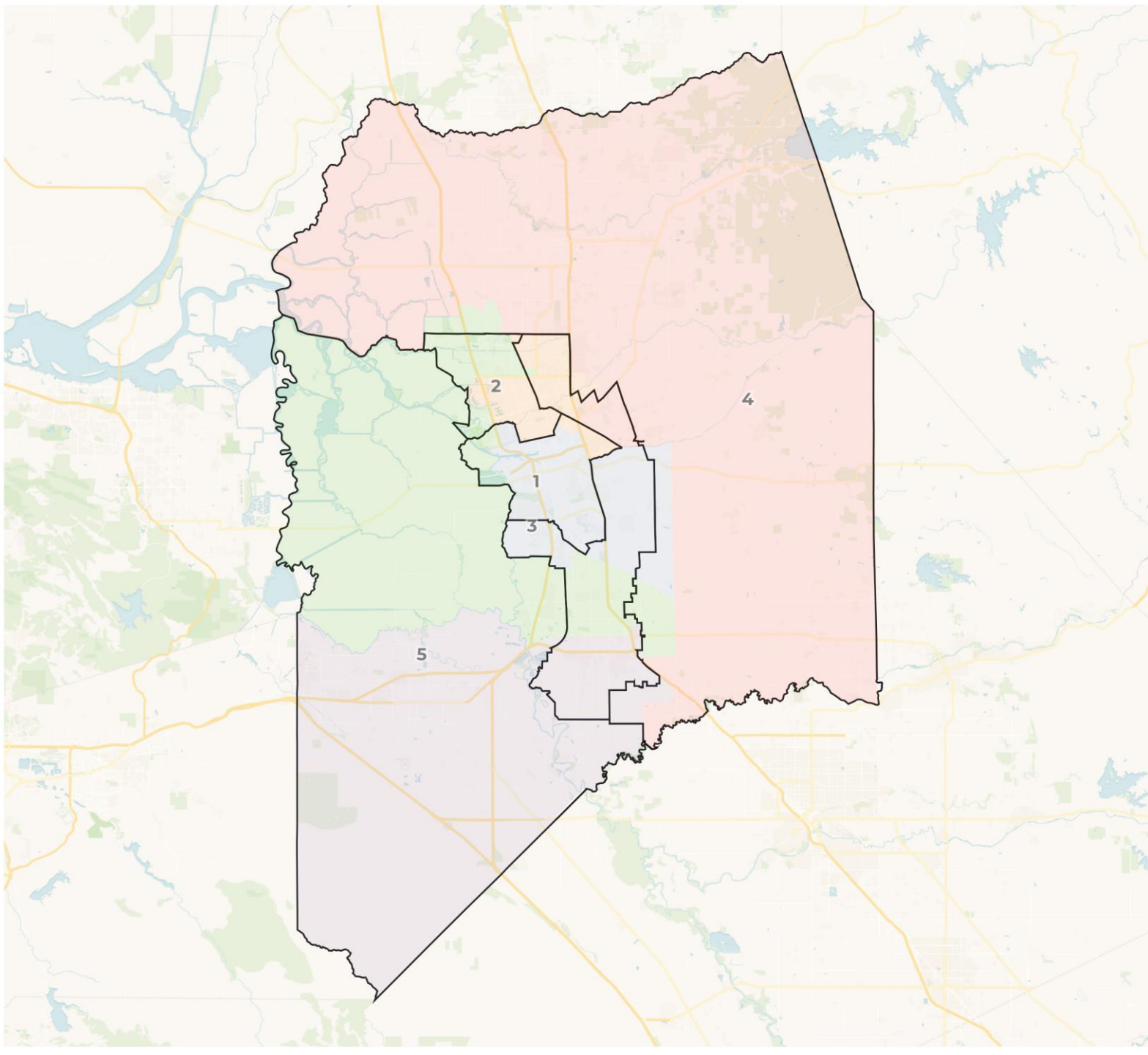
Draft Plan D3

After presenting Draft Plan D2 to the Board of Supervisors, a series of suggestions were offered by the Board on possible improvements to be considered.

Changes made to Draft Plan D2:

- Try to move as much Stockton population in District 2 by moving its border further north
- Move District 3 to accommodate this shift
- Move Waterloo into District 4
- Move District 5 further east to include more agricultural areas





2020 Census

	1	2	3	4	5
Population	157,657	156,287	156,426	146,148	160,795
Deviation	2,194	824	963	-9,315	5,332
Deviation %	1.4%	0.5%	0.6%	-6.0%	3.4%
AiAn	832	536	664	530	519
AiAn %	0.5%	0.3%	0.4%	0.4%	0.3%
Latino	98,510	57,152	60,023	53,070	56,423
Latino %	62.5%	36.6%	38.4%	36.3%	35.1%
Asian	16,897	28,462	37,386	9,401	42,540
Asian %	10.7%	18.2%	23.9%	6.4%	26.5%
Black	15,941	18,631	10,376	1,488	9,902
Black %	10.1%	11.9%	6.6%	1.0%	6.2%

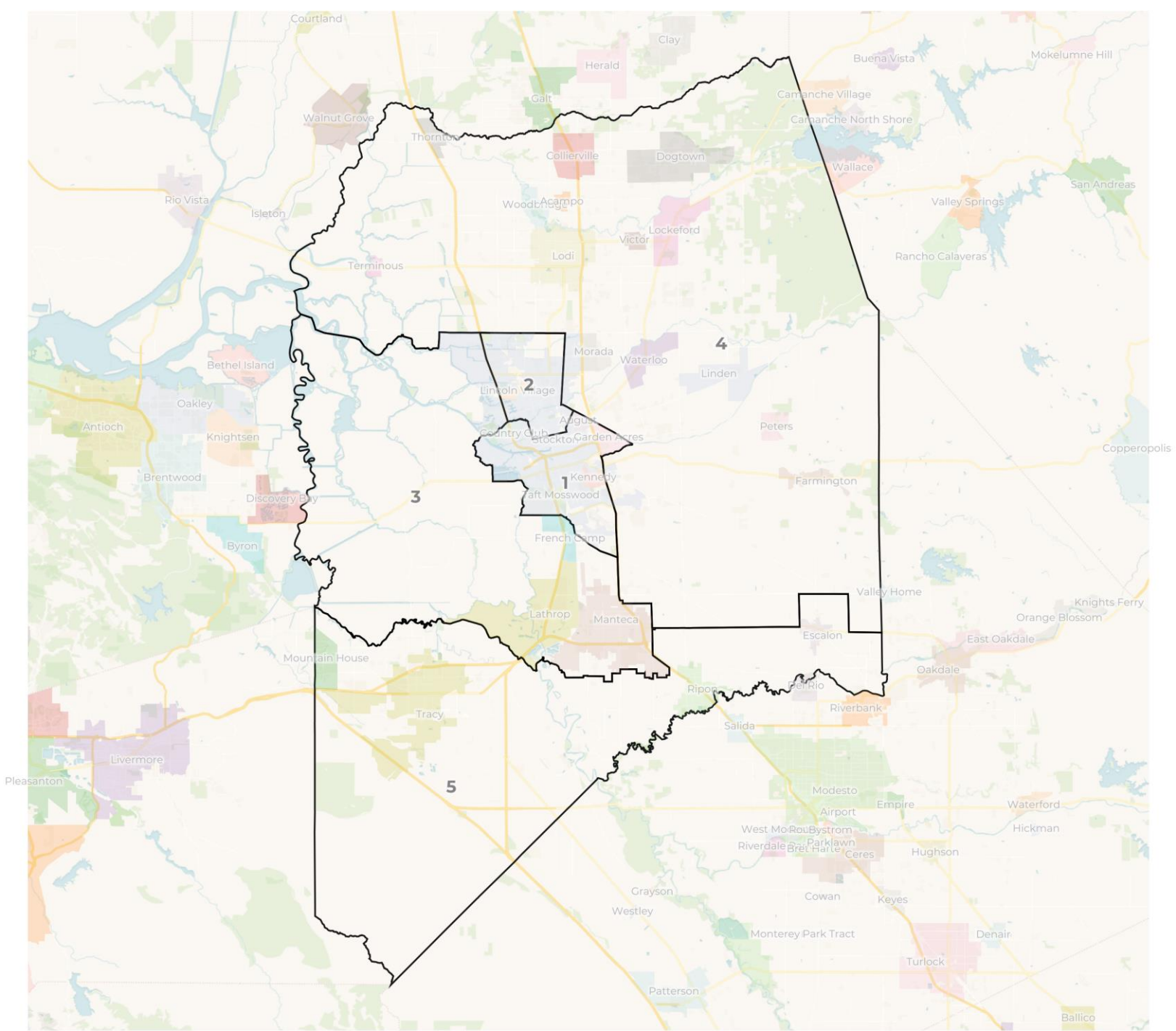
Citizen Voting Age Population (CVAP)

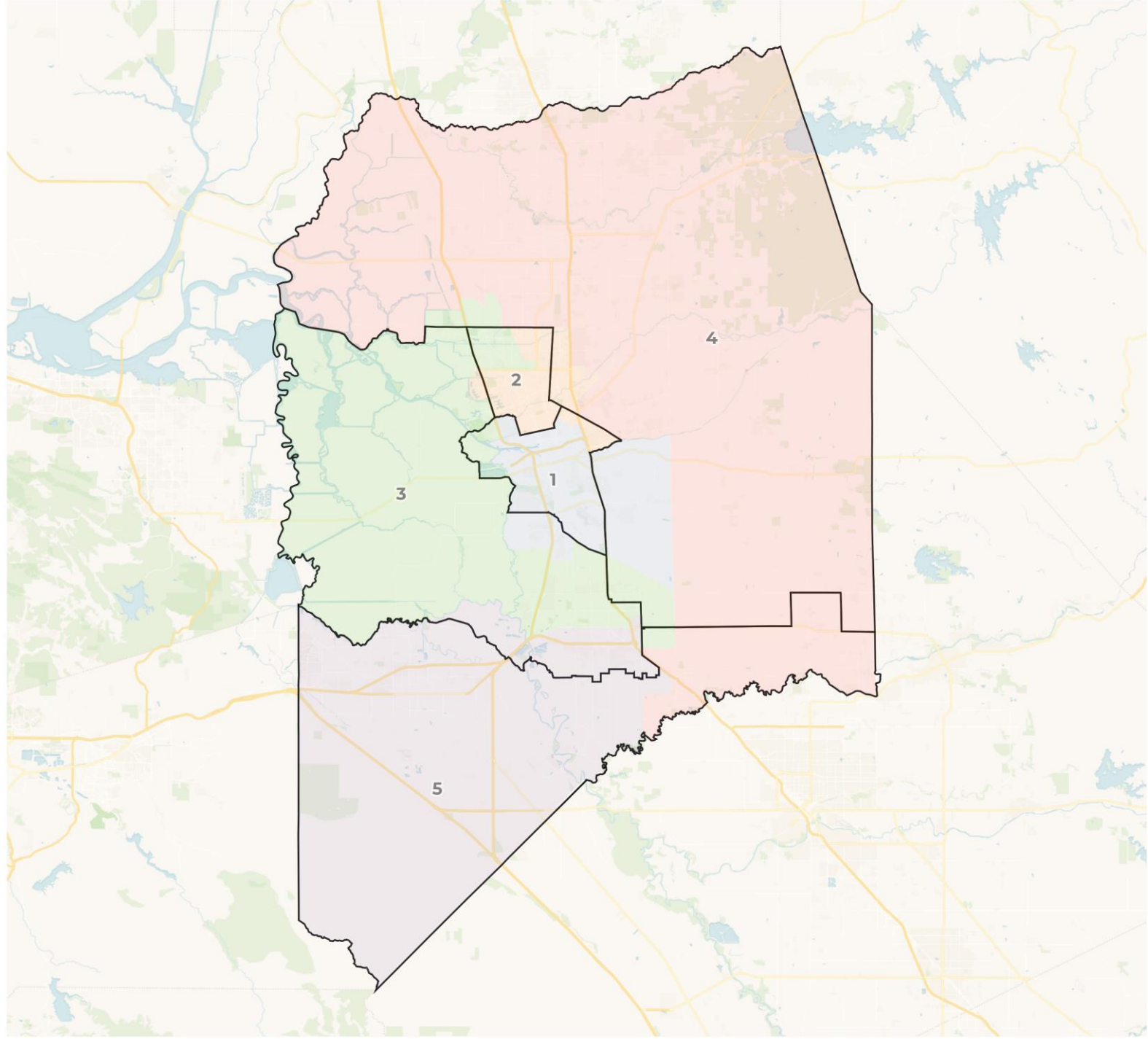
	1	2	3	4	5
Total CVAP	77,537	102,668	95,939	93,646	88,091
AiAn CVAP	145	323	331	310	185
AiAn CVAP %	0.2%	0.3%	0.3%	0.3%	0.2%
Latino CVAP	38,269	28,065	28,841	22,437	27,279
Latino CVAP %	49.4%	27.3%	30.1%	24.0%	31.0%
Asian CVAP	8,885	18,563	18,060	4,515	16,601
Asian CVAP %	11.5%	18.1%	18.8%	4.8%	18.8%
Black CVAP	11,400	11,225	7,882	1,240	4,983
Black CVAP %	14.7%	10.9%	8.2%	1.3%	5.7%

Draft Plan E

After presenting Draft Plan D2 to the Board of Supervisors, a series of suggestions were offered by the Board on the outlines of a new draft plan.

- Focus on preserving the cores of existing districts with 2 ag based districts on the westside of the county
- Keep Manteca and Lathrop whole in the new ag district
- Expand District 5 to include Ripon and Escalon





2020 Census

	1	2	3	4	5
Population	157,762	160,184	151,997	150,144	157,226
Deviation	2,299	4,721	-3,466	-5,319	1,763
Deviation %	1.5%	3.0%	-2.2%	-3.4%	1.1%
AiAn	832	572	606	522	549
AiAn %	0.5%	0.4%	0.4%	0.3%	0.3%
Latino	98,527	60,370	58,828	56,240	51,213
Latino %	62.5%	37.7%	38.7%	37.5%	32.6%
Asian	16,905	34,765	27,256	21,226	34,534
Asian %	10.7%	21.7%	17.9%	14.1%	22.0%
Black	15,941	19,697	9,210	3,492	7,998
Black %	10.1%	12.3%	6.1%	2.3%	5.1%

Citizen Voting Age Population (CVAP)

	1	2	3	4	5
Total CVAP	77,600	102,520	92,313	93,141	92,307
AiAn CVAP	145	346	264	323	216
AiAn CVAP %	0.2%	0.3%	0.3%	0.3%	0.2%
Latino CVAP	38,277	29,145	28,519	23,564	25,386
Latino CVAP %	49.3%	28.4%	30.9%	25.3%	27.5%
Asian CVAP	8,886	21,352	11,644	11,084	13,658
Asian CVAP %	11.5%	20.8%	12.6%	11.9%	14.8%
Black CVAP	11,400	12,297	6,005	2,834	4,194
Black CVAP %	14.7%	12.0%	6.5%	3.0%	4.5%

From COI to Recommended Map(s)

Finalizing the RAC Process

This is the final hearing of the RAC.

- Review these Draft Maps
- Propose changes
- Vote to recommend one or multiple draft maps to the Board of Supervisors



Redistricting Timeline



Public Workshops



Census Data



Public Meetings



Draft Maps
Published



Adoption
Hearing

Public Outreach and Education

Community Meetings

Public Hearings

AUG

AUGUST 17
Outreach #1

SEPT

SEPTEMBER 15
Outreach #2

SEPTEMBER 29
Outreach #3

OCT

OCTOBER 13
Meeting #1

OCTOBER 27
Meeting #2

NOV

NOVEMBER 10
MEETING #3

NOVEMBER 16
Present Final Maps

DEC

DECEMBER 7
Approve Final Map



REDISTRICTING PARTNERS